



**Western Australia Branch of
The Partners of Veterans Association of Australia Inc.**

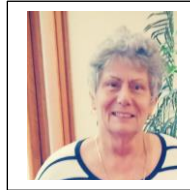
National Patron: Lady Lynne Cosgrove

ABN: 89 128 817 165



**FOR THOSE WHO STAND BESIDE THEM
EXECUTIVE MANAGEMENT COMMITTEE 2020/2021**

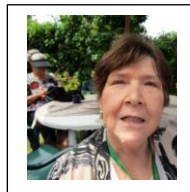
President



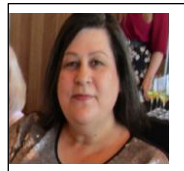
Bev Benporath

[**wapresident@pva.org.au**](mailto:wapresident@pva.org.au)

Vice President



Ellen Hathaway



Shelley Grogan

[**wasecretary@pva.org.au**](mailto:wasecretary@pva.org.au)

TBA/Treasurer



[**watreasurer@pva.org.au**](mailto:watreasurer@pva.org.au)

State Board Members:

Lee Gilmore Evette House Maureen Pitchers
Cheryl Cocodis Anne Barker Gail Hay

Postal Address: PO Box 2435, Warwick WA 6005 | **Support Line:** 1300 553 835

Email: wasecretary@pva.org.au | [facebook.com/partnersofveteransaus](https://www.facebook.com/partnersofveteransaus)

[**www.pva.org.au**](http://www.pva.org.au)